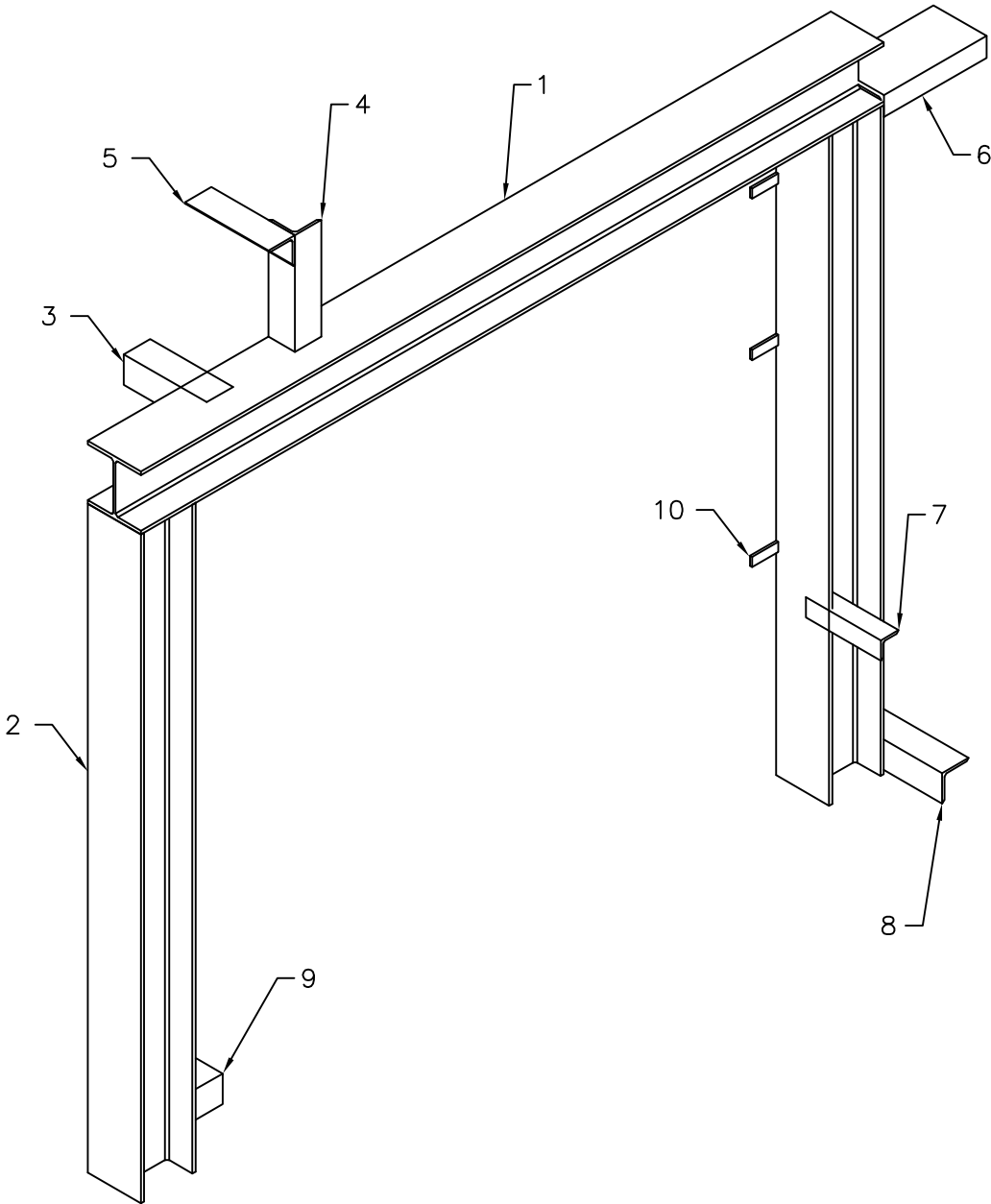
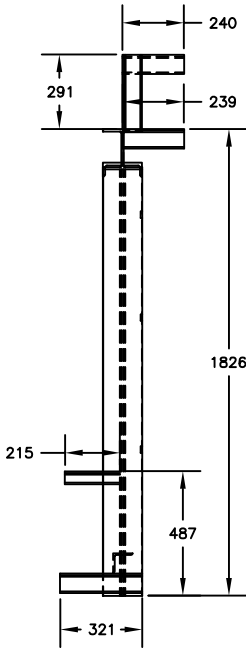
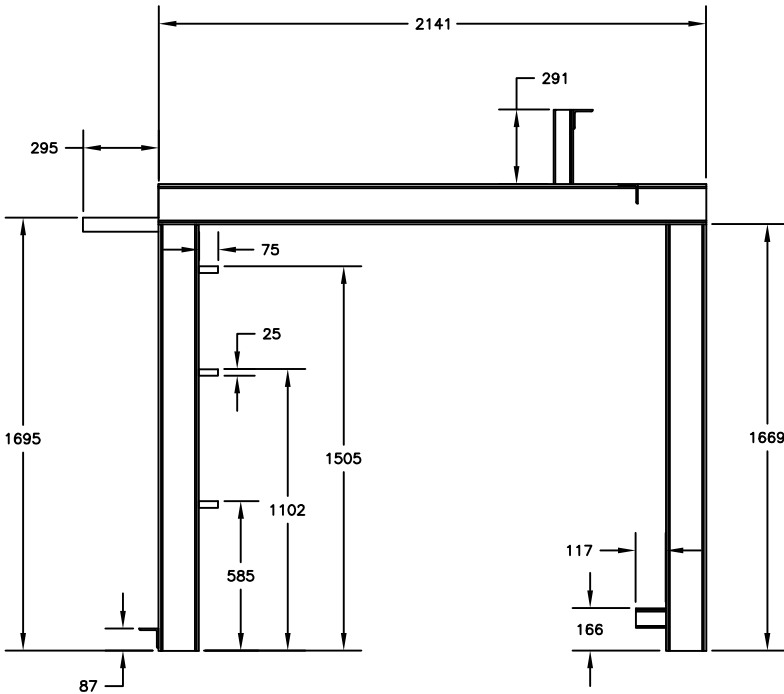
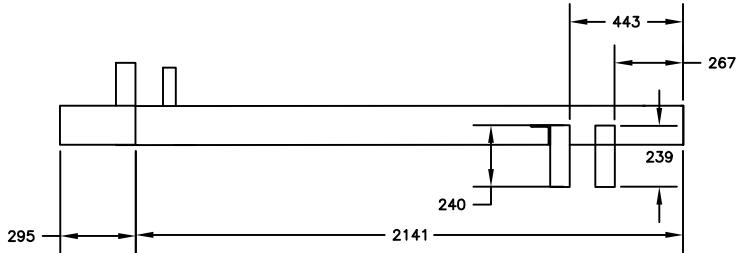


Bill of Materials					
Item	Description	Size	Length (MM)	Material	Qty
1	W-Beam	V6x20	2140.59	A572	1
2	W-Beam	V6x20	1668.96	A572	2
3	Angle Support	L3x3x1/4	238.759	A36	1
4	Angle Support	L3x3x1/4	291.336	A36	1
5	Angle Support	L3x3x1/4	240.488	A36	1
6	C-Channel	C6x13	295.25	A36	1
7	Angle Support	L2x2x1/4	215.948	A36	1
8	Angle Support	L3x3x1/4	321.114	A36	1
9	Angle Support	L3x3x1/4	117.442	A36	1
10	CS Flat Plate	1/4"	75 x 25.4	A516 Gr. 70	3



- NOTES:
- ALL TAPPED BRANCHES TO INCLUDE TWO (2) GUSSETS LOCATED 90° APART.
 - ALL SUPPORT WELDS SHALL BE CONTINUOUSLY WELDED.
 - MATERIAL TEST REPORTS ARE REQUIRED.
 - ALL MATERIALS USED SHALL BE NEW & UNUSED.

0	F	19.08.24	FOR APPROVAL	AJD	AJD	IES	SES
REV.	STATUS	DATE	PURPOSE OF ISSUE	PREP.	CHKD.	APPD.	AUTH.
CLIENT: SERVICE LOCATION: UNIT TAG NO:		ENER TECHNOLOG					
		PROPANE REFRIGERATION PACKAGE					
		IRAQ					
		RU-001 A/B					
VENDOR LOGO							
Contract No.		P.O. No.		ENER-MME-2024-100-001		SCALE	
DRAWING TITLE:							
60501,60601,61201,T0675 & T0775							
DRAWING NO.				REV.	SHEET No.	SIZE	
MPE007-60791				0	1 OF 1	D	